

Social and Biodiversity Impact Assessment (SBIA) Manual for REDD+ Projects



Brownbag
Presentation
USAID
January 25, 2012



In collaboration with:



Contents

- Introduction
Joanna Durbin- Climate, Community & Biodiversity Alliance
- Overview of the Development of the SBIA Manual
Michael Richards- Forest Trends
- Seven Stages for SBIA
Steve Panfil- Conservation International
- Comments on SBIA in practice in Brazil and DRC
- Questions



Overview of the Development of the SBIA Manual

Michael Richards - Forest Trends



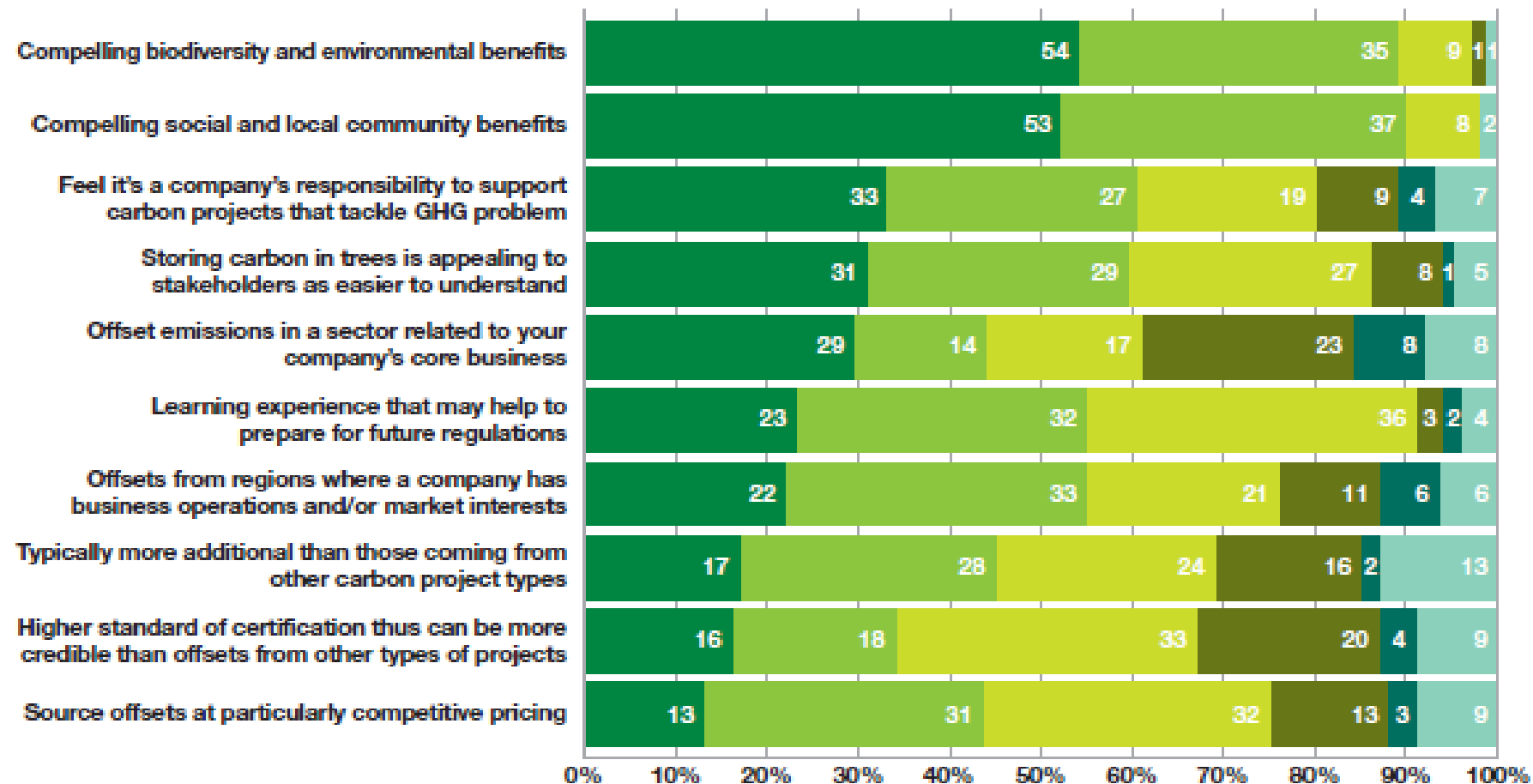
Why worry about monitoring social impacts?

- Social sustainability essential for carbon objectives: investor risk
- Effective implementation of Standards (and Safeguards)
- Legal/ethical reasons – International legislation and Conventions
- Negative social impacts can derail a project – early detection vital
- Adaptive management – improved design
- Access to voluntary carbon market – buyer priorities



What do buyers want?

Motivation for interest in offsets from forest carbon projects instead of from other sectors



Key

Total sample = 98-111

- Strongly agree
- Agree
- Don't agree
- Not sure

Source: *The Forest Carbon Offsetting Report 2010*

http://www.ecosecurities.com/Standalone/Forest_carbon_offsetting_report_2010/default.aspx

Development of SBIA Manual: background & process

- Little guidance on social impact assessment (SIA) for carbon projects
- Consortium of 4 NGOs formed 2009 to develop SIA Manual (2010)
- Training workshops in Peru & Tanzania (2010), Kenya & DRC (2011)
- Field testing and peer reviews in early 2011: Manual revised and Biodiversity incorporated
- Translation to French and Spanish
- Donors: PROFOR, Rockefeller Foundation, USAID-Translinks, GEF-UNDP, Morgan Stanley, NORAD, Moore



Meeting the CCB Standards

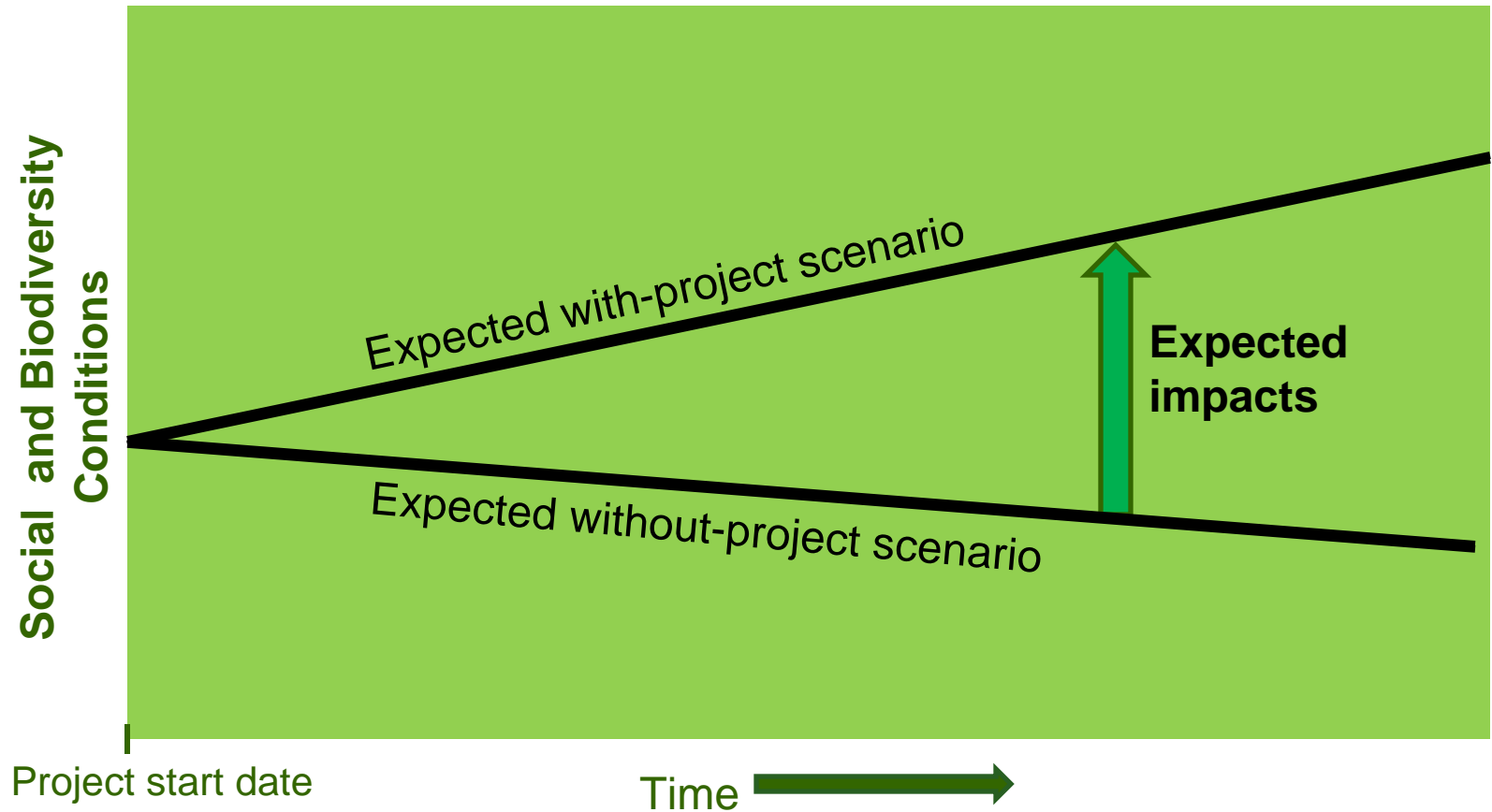
CM1.1. Use **appropriate methodologies** to estimate the impacts on communities ... a credible estimate of impacts must include changes in community well-being **due to project activities** and ... be based on clearly defined and **defendable assumptions about how project activities will alter social and economic well-being**

Similar language in CCB Standards for biodiversity benefits

Therefore projects must show social and biodiversity benefits are additional (due to project) like carbon



Social and Biodiversity Additionality



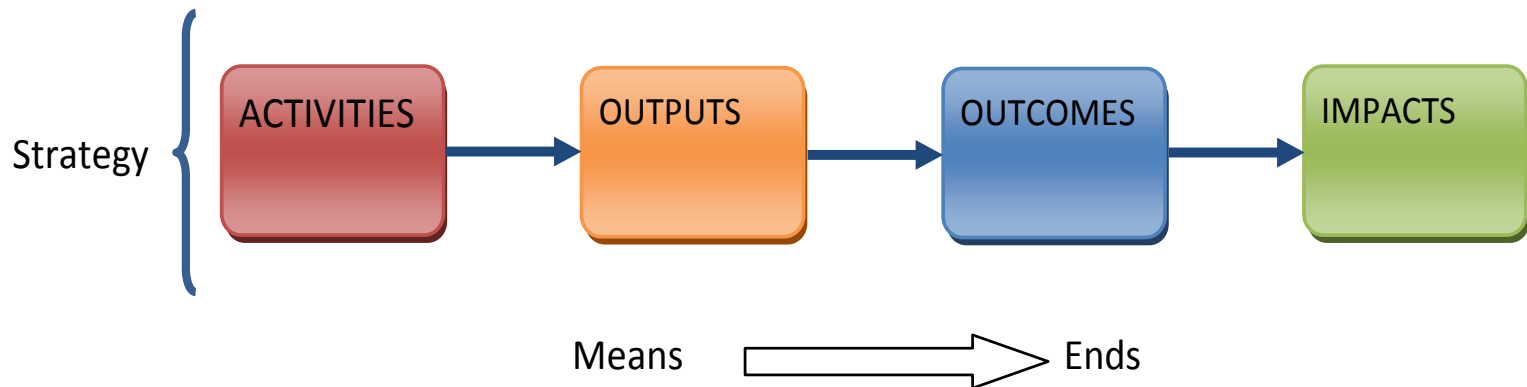
Key challenges for SBIA

- 'Attribution' (showing cause and effect)
- Cost
- Nature of social impacts
- Participation
- Lack of data on social impacts (contested perspectives)



'Theory of change' approach to SBIA

- Problems with 'matching methods' approaches
- Increasing use of 'theory of change': micro-finance sector, donors, 'Open Standards' (Conservation Measures Partnership)
- TOC is project's theory of how it will achieve its social and biodiversity objectives based on cause and effect analysis



3 Sections of SBIA Manual

- Part 1 Core Guidance for Project Proponents
- Part 2 Social Impact Assessment Toolbox
- Part 3 Biodiversity Impact Assessment Toolbox



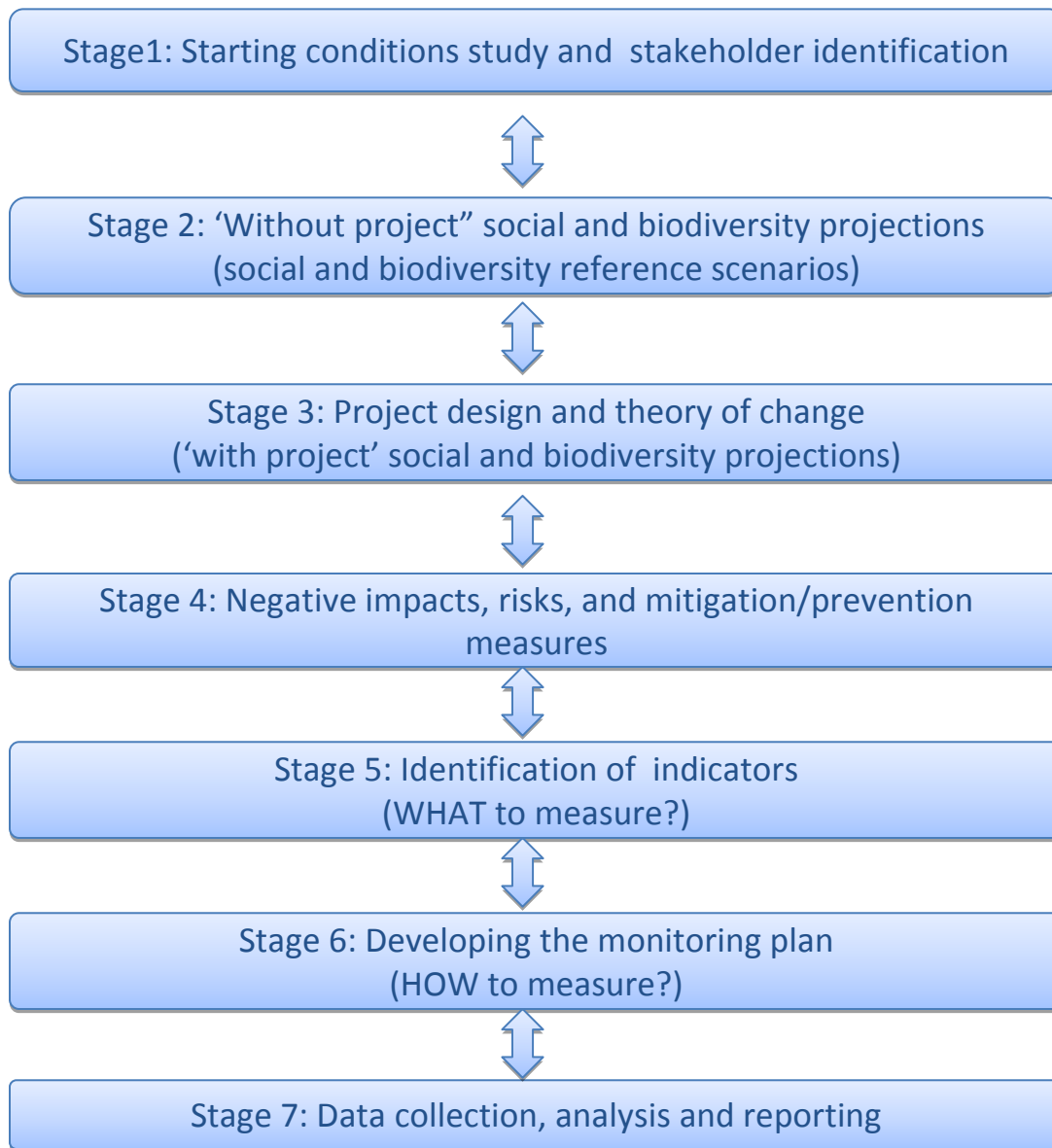


Seven Stages for SBIA

Steve Panfil- Conservation International



The Seven Stages



Benefits of SBIA Approach

- Participatory – local stakeholder ownership
- Lower cost (compared to 'matching methods')
- Strategic design and clarity of objectives
- Relatively simple to understand for local stakeholders – transparency
- Adaptive management



SBIA from an Auditor's Perspective

Comments prepared by Jeff Hayward-
Rainforest Alliance



SBIA Advances for Validation

- Social & Bio-diversity Methodology, on par with C
- Causal model of Theory of Change, results-based
- Participatory process, effective involvement
- Time dimension, future impacts
- Reducing project risks, buffer reserve benefit



SBIA Manual helps Auditors

- Train in SBIA Parts 1, 2, 3
- Differentiate 'outcomes' & 'impacts'
- Discern 'intended' & 'unintended' impacts
- Calibrate expectations (process, monitoring)
- Frame corrective action requests



Where to get the Manual

- http://www.climate-standards.org/documents/social_biodiversity.html
- http://www.forest-trends.org/publications/sbia_manual/
- <http://rmportal.net/library/content/translinks/2011/forest-trends/social-and-biodiversity-impact-assessment-sbia-manual-for-redd-projects-part-1-version-2-2013-core-guidance-for-project-proponents>
- Available in English, French and Spanish

